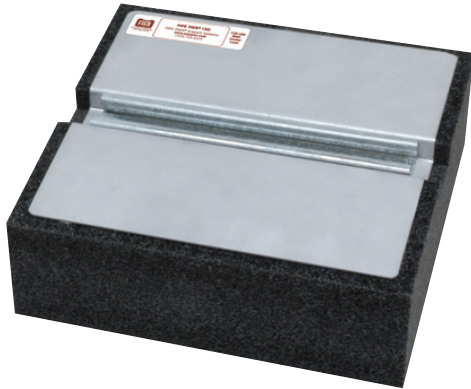


The PIPE PIER® 150

PIPE PIER® support blocks have been designed and engineered specifically for rooftop and raised floor applications. The maximum center load for the PIPE PIER® 150 is 150 lbs. per support block. Piping should be attached using standard strut clamps, rollers, or other approved accessories. Recommended maximum spacing between support blocks is 10 feet.



PIPE PIER® 150

Stands at a height of 4" with a length of 12" and is designed for installation of pipe and conduit with a maximum 150 pound capacity.

Components of PIPE PIER® 150

- Closed-cell, medium density, black Polyethylene Foam Ethafoam HS 45*
- 14 Gauge Galvanized Strut Channel
- Hot melt adhesive-bonding sheet metal to foam block BONDMASTER INSTAWELD 34-3378
- 14 Gauge Galva Neal Sheet Metal

**Trademark of Dow Chemical Co.*



PIPE PIER® Support Systems

2340 Niagara Lane North, Plymouth, MN 55447

P: 763.745.4223 F: 763.745.4222 www.pipepier.com