

## The Plenum Pier™

The Plenum Pier™ support block is designed and engineered specifically for plenum and interior applications. The maximum center load for the Plenum Pier™ is 50 lbs per support block. Piping should be attached using standard strut clamps and accessories. Recommended maximum spacing between support blocks is 10 feet. The Plenum Pier™ is UL tested for quality assurance. For UL2043 test results, please click [here](#).



### Plenum Pier™

2"x4"x10-1/2"; 50 lbs Max Load

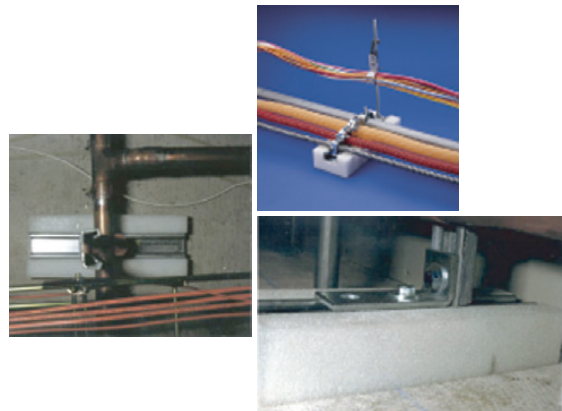
### Advantages of Plenum Pier™

- No dust. No drilling
- Use in a variety of applications
  - Raised and hollow floors
  - Computer rooms
  - Hollow walls
  - In conjunction with cable trays

### Components of the Plenum Pier™

- Closed-cell, medium density, off-white Polyethylene Foam Ethafoam 4101\*
- 14 Gauge Strut Channel
- Hot melt adhesive-bonding strut to foam block BONDMASTER INSTAWELD 34-3378

*\*Trademark of Dow Chemical Co.*



PIPE PIER® Support Systems  
2340 Niagara Lane North, Plymouth, MN 55447  
P: 763.745.4223 F: 763.745.4222 [www.pipepier.com](http://www.pipepier.com)