

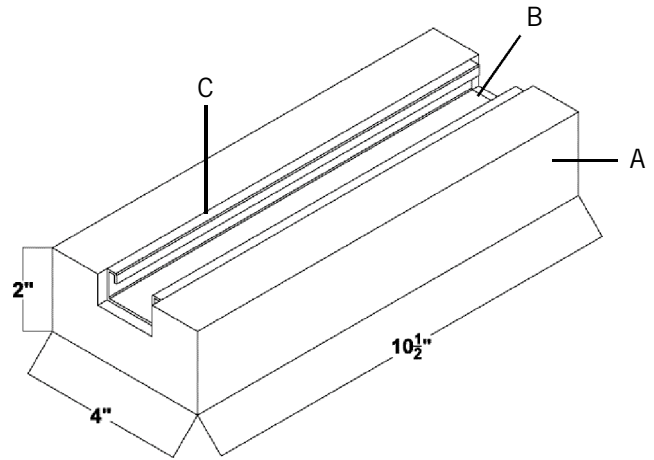


Plenum Pier™ support blocks have been designed and engineered specifically for plenum and interior applications. The maximum center load for the Plenum Pier™ is 50 lbs per support block. Piping should be attached using standard strut clamps and accessories. Recommended maximum spacing between support blocks is 10 feet.

For standard rooftop applications, refer to the PIPE PIER® Classic submittal .

Components

- A. Closed-cell, medium density, off-white polyethylene foam Ethafoam 4101*
- B. 14 Gauge Strut Channel
- C. Hot melt adhesive-bonding strut to foam block BONDMASTER INSTAWELD 34-3378



*Trademark of Dow Chemical Co.

Ethafoam 4101* polyethylene foam is ideally suited as a component material where cushioning, vibration dampening, and flame retardant characteristics are desirable. The Plenum Pier™ components satisfactorily meet and exceed the requirements of UL Standard 2043, “Fire Test for Heat and Visible Smoke Release for Discrete Products and Their Accessories Installed in Air-Handling Spaces.” Ethafoam 4101 has been tested to ASTM D 3575 Suffixes B, BB, D, G, L, T & W Method B.

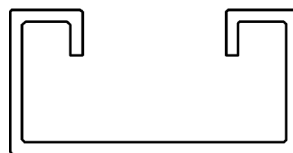
*Trademark of Dow Chemical Co.

Physical Properties	Test Method	Direction	Value
Density	ASTM D 3575, Suffix W, Method B	N/A	2.4 pcf
Compression Set	ASTM D 3575, Suffix B	Vertical	<20%
Compression Creep @ 2.5 psi (1000 hr/72 F)	ASTM D 3575, Suffix BB	Vertical	<10%
Thermal Stability	ASTM D 3575, Suffix S	N/A	<1%
Water Absorption	ASTM D 3575, Suffix L	N/A	<0.2 lb/sq ft

14 Gauge Strut Channel

The 14 gauge strut channel is cold roll-formed from high quality carbon steel. The channel finish is hot dipped mill galvanized. The raw steel used conforms to ASTM 570 GR 33 and ASTM A446 GR A.

Cal Gold Strut



BONDMASTER INSTAWELD 34-3378 is a sprayable heat & moisture-resistant hot melt adhesive. It has a 350 degree melting point and is applied by a nozzle applicator during the manufacturing process. It conforms to MS-CC926.

U.S. Patent No. 5855342, U.S. Patent No. 6305650, Other patents pending